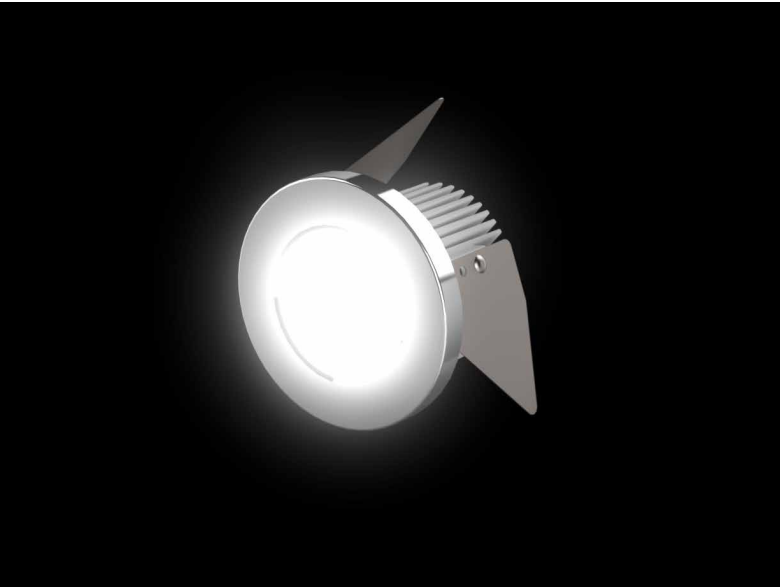
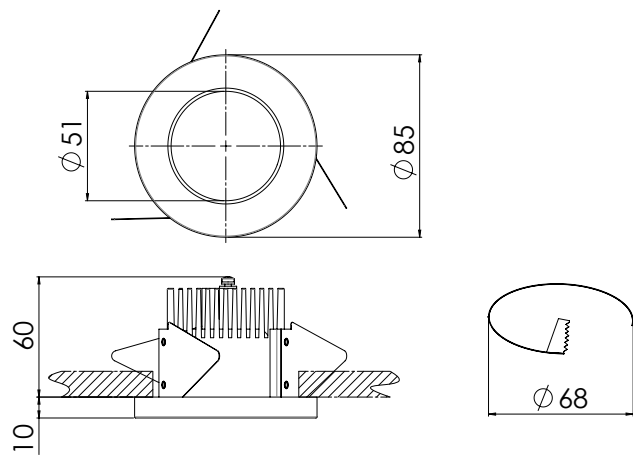


RECESSED DOWNLIGHT

# DLO4



RECESSED WATERTIGHT DOWNLIGHT FOR WET UNITS, SANITARY AND ACCOMODATION AREAS








[mm]

## STANDARD CONFIGURATION

Housing	Aluminium
Cover	White or chrome ring with opal polycarbonate lens
Mounting	3 fixing springs for ceilings max. 20 mm
Connection type	Cable with plug
Protection class	IP65 in conjunction with ceiling
Light source	LED array
Wattage	Max. 5 W
Luminous flux	400 lm
CCT (color)	3,000 K
CRI	≥ 80

## AVAILABLE FEATURES

	EMI proof
	Shock proof
	Vibration resistant
	Adaptation light
	Controllable

## YOUR REQUIREMENTS

Please contact us for different configurations or further information on this luminaire type. Based on your requirements, the final part number will be provided.

Technical modification reserved without prior notice.



LIGHTPARTNER LICHTSYSTEME GMBH & CO. KG  
AM MOHRENSHOF 7 · 28277 BREMEN · GERMANY  
+49 (0)421 - 87 195 - 0 · SALES@LIGHTPARTNER.DE

# LIGHTPARTNER NAVY