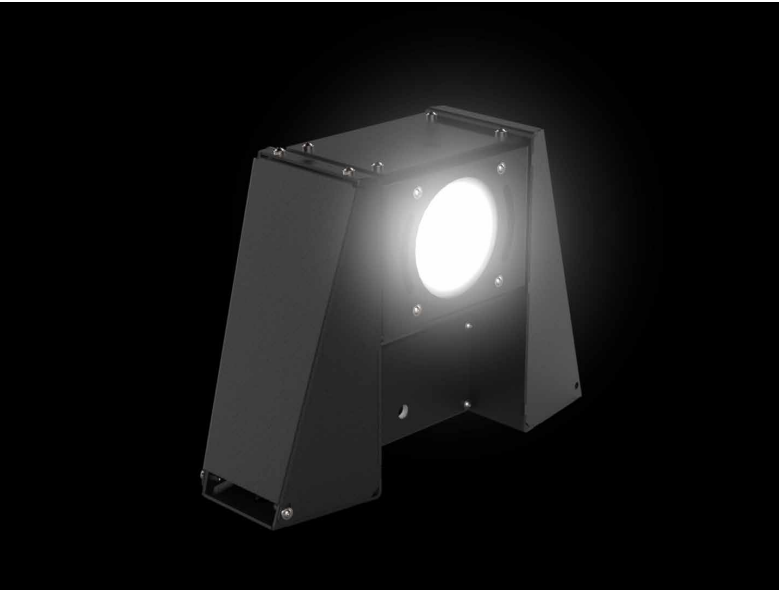
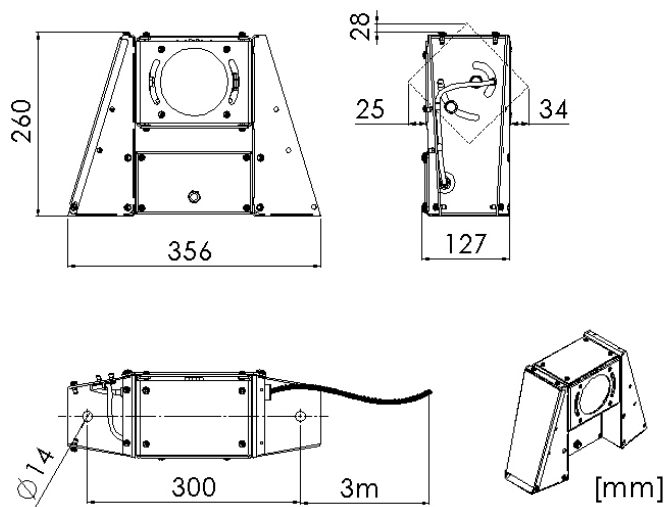


ST80 MIL










STAINLESS STEEL FLOODLIGHT FOR OPEN DECKS,
HOLDS AND HANGAR



STANDARD CONFIGURATION

Housing	Stainless steel, powder coated black (RAL9005)
Safety pane	Tempered glass, DIN 12150, clear
Mounting	2 brackets
Cable entry	1 cable gland
Protection class	IP56
Light source	LED array
Wattage	50W
Luminous flux	6,000 lm
CCT (color)	5,000 K
CRI	≥ 80

AVAILABLE FEATURES

	EMI proof
	Shock proof
	Vibration resistant
	NVG compatible
	Adaptation light
	Various optics
	Controllable

YOUR REQUIREMENTS

Please contact us for different configurations or further information on this luminaire type. Based on your requirements, the final part number will be provided.

Technical modification reserved without prior notice.



LIGHTPARTNER LICHTSYSTEME GMBH & CO. KG
AM MOHRENSHOF 7 · 28277 BREMEN · GERMANY
+49 (0)421 - 87 195 - 0 · SALES@LIGHTPARTNER.DE

LIGHTPARTNER NAVY